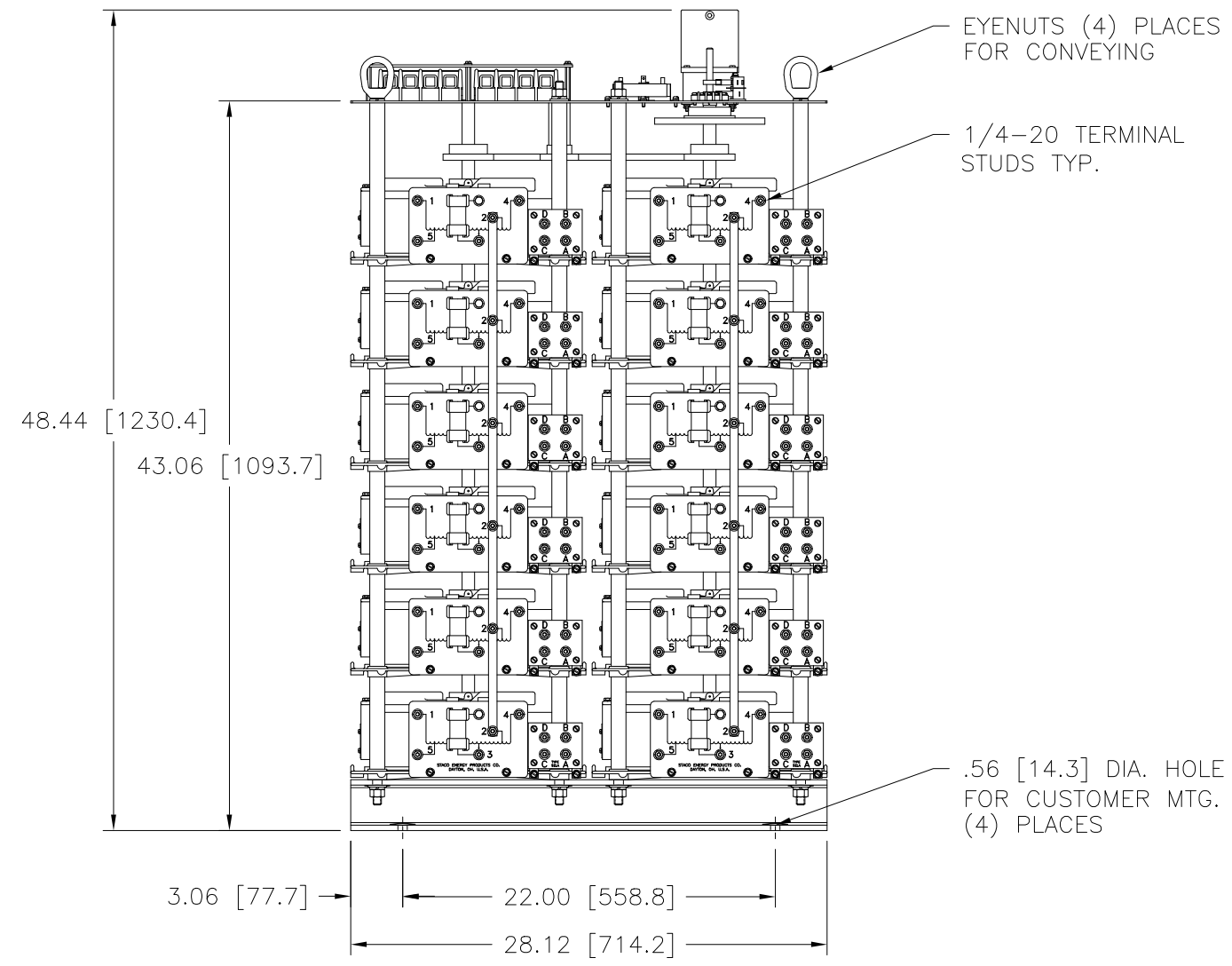
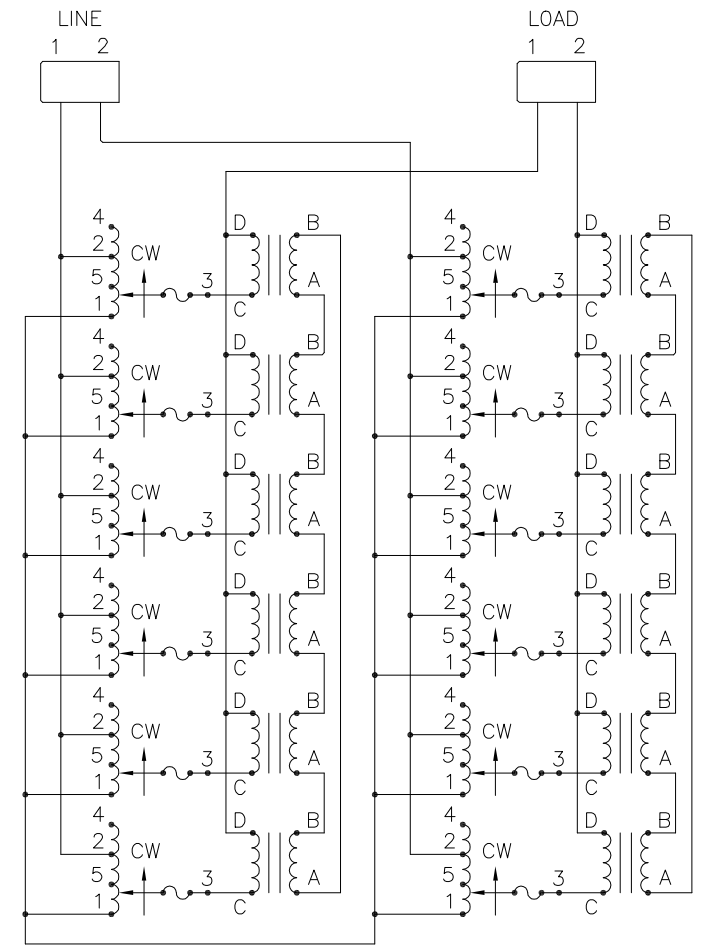


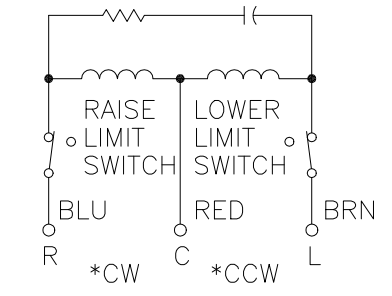
PARALLELING CHOKES



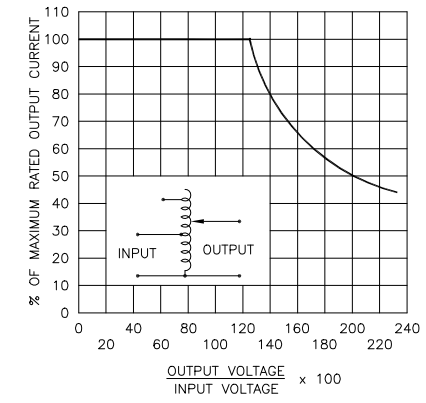
.56 [14.3] DIA. HOLE FOR CUSTOMER MTG. (4) PLACES



SCHEMATIC



MOTOR CIRCUIT  
 120V, 50/60 HZ  
 \* ROTATION AS VIEWED FROM TOP END  
 MOTOR SPEED: SEE CHART



MAXIMUM OUTPUT CURRENT OF ANY DUAL INPUT VOLTAGE OR VOLTAGE DOUBLER UNIT OPERATED AT LOWER INPUT VOLTAGE.

\* MAXIMUM OUTPUT CURRENT IN OUTPUT VOLTAGE RANGE FROM 0 TO 25% ABOVE LINE VOLTAGE. AT HIGHER OUTPUT VOLTAGES, OUTPUT CURRENT MUST BE REDUCED ACCORDING TO RATING CURVE, FIGURE A.

++ MAXIMUM KVA AT MAXIMUM OUTPUT AND CORRESPONDING DE-RATED CURRENT. MAXIMUM KVA AT LOWER OUTPUT VOLTAGES MAY BE CALCULATED FROM RATING CURVE, FIGURE A.

V.D. = VOLTAGE DOUBLER.

WIRING	INPUT		OUTPUT		SHAFT ROTATION TO INCREASE VOLTAGE	TERMINAL CONNECTIONS		
	VOLTS	HERTZ	VOLTS	CONSTANT CURRENT LOAD		FOR INCREASING VOLTAGE AS VIEWED FROM ROTOR END		
				MAX. AMPS		MAX. KVA	INPUT	OUTPUT
SINGLE PHASE SERIES PARALLEL	480	50/60	0-480	168	80.6	CW	4-4	D-D
			0-560	168	94.1	CW	2-2	D-D
	240	50/60	0-560	168-72 V.D.	40.3 ++	CW	5-5	D-D

SPEED (SECONDS)	MODEL NUMBER
30	30M5021-12PS
60	60M5021-12PS

SPECIFICATIONS			
UNLESS OTHERWISE SPECIFIED, TOLERANCE IS #	UNITS	TITLE: SPEC. CONTROL DRAWING	
DECIMALS	IN [mm]	AUTO. VOLTAGE REGULATOR	
.XX .0000-12		TYPE: M5021-12PS	
.002 .03		MATERIAL:	
ANGLES	DRAFT	DRAWN BY: TIM RAU	
1°	1-1/2°	DATE: 10/8/97	
		FIRST USED ON: DO NOT SCALE DWG.	
		CHECKER: DATE: WEIGHT APPROX. 940 LBS.	
		ENGINEER: DATE: SCALE .2=1 SHEET 1 OF 1	
<p>THE INFORMATION AND DESIGN DISCLOSED HEREIN WAS ORIGINATED BY AND IS THE PROPERTY OF STACO ENERGY PRODUCTS CO., WHICH RESERVES ALL PATENT, PROPRIETARY, DESIGN, MANUFACTURING, REPRODUCTION, USE AND SALE RIGHTS THEREOF, AND TO ANY ARTICLE DISCLOSED THEREIN EXCEPT TO THE EXTENT RIGHTS ARE EXPRESSLY GRANTED TO OTHERS. THE FOREGOING DOES NOT APPLY TO VENDOR PROPRIETARY PARTS.</p>			
<p>STACO ENERGY PRODUCTS CO. A COMPONENTS CORPORATION OF AMERICA COMPANY DAYTON, OHIO U.S.A.</p>			
<p>CUSTOMER APPROVAL: DATE: DWG. NO. 031-8018</p>			